

VAKUM-8P

DOCK STATION

COLLECT DATA FROM UP TO 8 BODY WORN CAMERAS SIMULTANEOUSLY

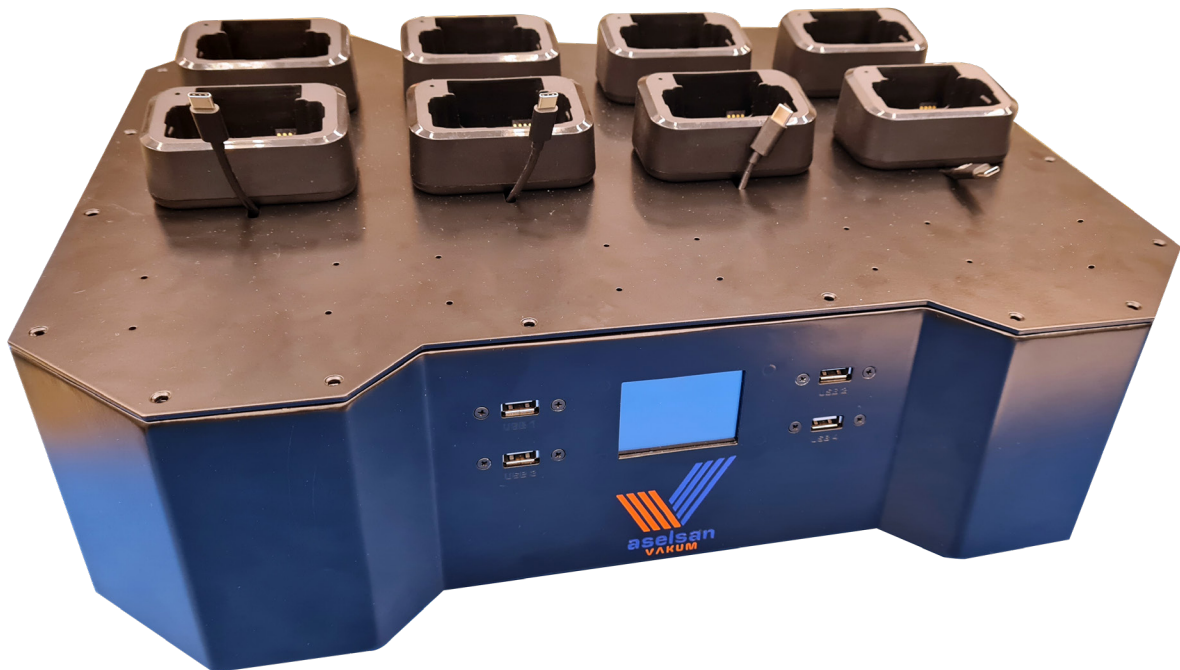
ENABLES EASY HANDLING OF THE BODY WORN CAMERAS WITH FAST CHARGING, SECURE AND QUICK DATA TRANSFERRING

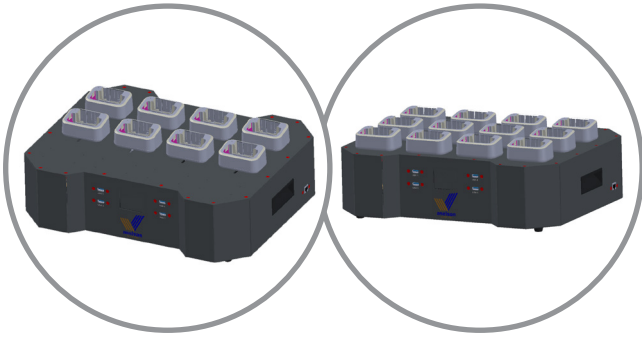
USER INTERFACE WITH COLORS AND INDICATOR

CHARGING BODY WORN CAMERAS

LOG MANAGEMENT

UP 8 TB DATA STORAGE CAPACITY





VAKUM-8P

DOCK STATION

Specification

Data Collection

Average Speed	35 MB/s
---------------	---------

Appearance

Dimension	477 x 385 x 167 mm
Body Camera	Up to 8 body cameras
Button	1 x power button

Hardware

CPU	Quad core CPU
Memory	128 GB SSD / 8 TB HDD
Operation System	Supports Windows 10, 64-bit (Insided in the station)
Charging Duration for Body Camera	2 hours
Power Consumption	240 W

Interface

USB Interface	4 x USB 2.0 Type-A interface (for any device charging) 4 x USB 3.0 Type-C Interface (for body worn cameras)
Port Docks	8 docks (for body worn cameras)
Input Power	220VAC
Network Interface	1 x 1000M Ethernet interface
Screen Interface	2.4" TFT Screen Interface (for available port, charging, data transfer and station memory statuses)

General

Weight	7.48 kg
Working Temperature	Environmental +5 °C to +40 °C

Approvals

EMC	EN 55032 Class A, EN 55035, EN 61000-3-2, EN 61000-3-3, EN 61000-4-2, EN 61000-4-3, EN 61000-4-4, EN 61000-4-5, EN 61000-4-6, EN 61000-4-8, EN 61000-4-11
LVD	EN 62368-1
Environment	EN 60068-2-1, EN 60068-2-2, EN 60068-2-48
Ingress Protection	IP20

Functions

User interface with colours and indicator

- Available port coloring,
- Data transfer status coloring,
- Data transfer complete indicating coloring,
- Body camera charge status sign,

Obtain date information of data and the body worn camera's serial no

If data transferring suddenly interrupted, the dock station will continue to transfer data from the breakpoint on the next transfer

Preventing overwritten of data to dock station