



SMASH | 200/30

aselsan

30 MM REMOTE CONTROLLED
STABILIZED NAVAL GUN SYSTEM

#NavalSystems



REMOTE CONTROL
AUTOMATIC TARGET TRACKING
HIGH ACCURACY STABILIZATION
AUTOMATIC BALISTIC CALCULATION
HIGH HIT PROBABILITY
INDEPENDENT ELECTRO-OPTIC SIGHT
ADVANCED GRAPHICAL USER INTERFACE



aselsan

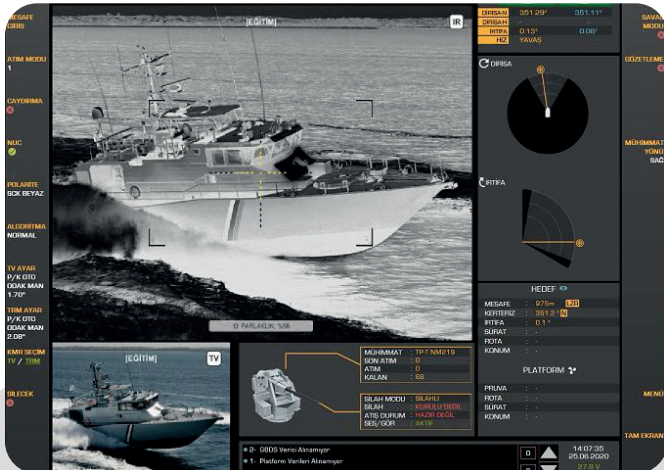
SMASH 200/30 is a Remote Controlled Naval Gun System fitted with a 30 mm gun integrated on a stabilized pedestal with independent Electro-Optic Sight and surveillance mode (without aiming the gun).

The system has excellent tracking and firing ability with a very high hit accuracy. It can be fed via two separate ammunition lines selected by the operator, using the remote operating panel.

- Effective against asymmetric threats
- Day/night operation under various weather and terrain conditions
- Automatic target detection and tracking
- Automatic ballistic calculation
- Automatic slew to targets assigned from the C3, radar, target designator
- Integration with Combat Management System
- Advanced graphical user interface
- Picture-In-Picture (PIP)
- High Accuracy Dual-Axis Gyro Stabilized Independent Electro-Optic Sight
- Surveillance mode (without aiming the gun)
- Manual operation as a back-up mode
- Built-in Test Capabilities
- Back-up Power (Battery Supply)
- Embedded Video Recording Capabilities
- Easy to integrate
- No deck penetration (except cables)
- High reliability
- Modular structure for upgrades and options

Sub-Units

- Turret
- System Operating Panel
- Gun Control Unit
- Mission Computer
- Commander Control Unit



- Electro-Optic Sight
 - Thermal Camera
 - TV Camera
 - Laser Range Finder
- Manuel Control Panel
- Servo Controller
- Power Unit
- Safety Switch
- Slipping (Optional)
- Electronic Control and Interface Unit

Technical Data

- Turret Weight : <1400 kg
(Including gun and ammunition)
- Gun : 30mm Mk44S Bushmaster II
- Rate of Fire : 200 rounds/min
- Ammunition Feeding : Dual
- Ammunition Capacity : 2 x 100 pcs
- Gun Elevation Angle : $-20(\pm 2)^{\circ}$ / $+70(\pm 2)^{\circ}$
- Gun Traverse Angle : $\pm 135^{\circ}$ (without slipping)
- : $n \times 360^{\circ}$ (with slipping)
- Gun Angular Speed : $60^{\circ}/s$
- EO Elevation Angle : $-30(\pm 2)^{\circ}$ / $+80(\pm 2)^{\circ}$
- EO Traverse Angle : $\pm 10^{\circ}$ (with respect to gun turret)
- Power Input : 110/220 VAC 50/60Hz

Applications

- Asymmetric Warfare
- Counter-Terrorism/Anti-Smuggling
- Coastal Defence
- Base Protection

Naval Platforms

- Patrol Boats
- Coast Guard Boats
- Combat Ships
- Landing Ships

