



SMASH

aselsan

200/12.7

REMOTE CONTROLLED WEAPON SYSTEM

#NavalSystems



REMOTE CONTROL
AUTOMATIC TARGET TRACKING
HIGH ACCURACY STABILIZATION
AUTOMATIC BALLISTIC CALCULATION
HIGH HIT PROBABILITY
BELOW DECK AMMUNITION RELOADING SYSTEM
ADVANCED GRAPHICAL USER INTERFACE



aselsan

REMOTE CONTROLLED WEAPON SYSTEM

General Specifications

- Remote Control
- High Accuracy Dual-Axis Gyro Stabilized Independent Electro-Optic Sight
- Automatic target detection and tracking
- Automatic ballistic calculation
- High Hit Probability
- Automatic slew to targets assigned from the CMS, radar, target designator
- Day/night operation under various weather and terrain conditions
- Surveillance mode (without aiming the gun)
- Advanced graphical user interface
- Picture-In-Picture (PIP)
- Integration with Combat Management System
- Below Deck Ammunition Reloading System (optional)
- Manual operation as a back-up mode
- Modular structure for upgrades and options
- High reliability
- Easy to integrate

Sub-Units

- Stabilized Turret
- System Operating Panel
- EO Gimbal
- Electro-Optic Unit (Thermal Camera, TV Camera, Laser Range Finder)
- Mission Computer
- Electronic Control and Interface Unit
- Power Unit

Technical Data

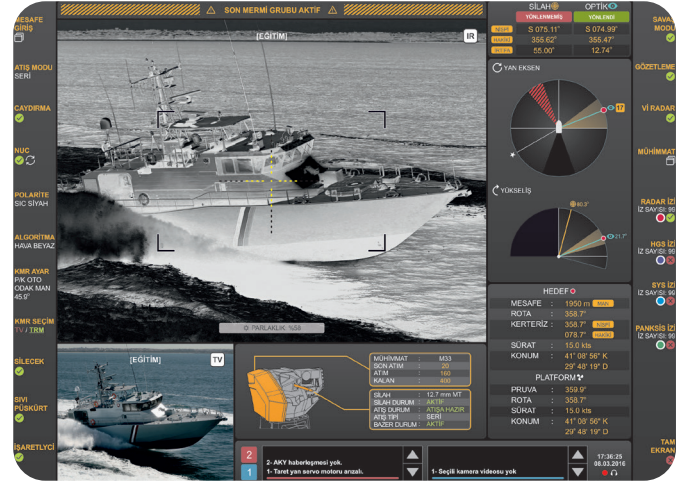
- Turret Weight: <450 kg (Including gun and ammunition)
- Gun: 7.62mm MG, 12.7 mm MG, 12.7mm NSV, 40mm Grenade Launcher
- Ammunition Capacity: 250 pcs.
- Gun Elevation Angle : $-20(\pm 2)^\circ$ / $+60(\pm 2)^\circ$
- Gun Traverse Angle: $n \times 360^\circ$ (with slipping option)
- Gun Traverse Angle: $\pm 135^\circ$ (without slipping)
- Gun Angular Speed (max.): $60^\circ/s$
- EO Elevation Angle: $-20(\pm 2)^\circ$ / $+60(\pm 2)^\circ$
- EO Traverse Angle: $\pm 7^\circ$ (with respect to the gun)
- EO Angular Speed (max.): $60^\circ/s$
- Power Supply: 28 VDC or 110/220VAC 50/60Hz

Applications

- Asymmetric Warfare
- Counter-Terrorism / Anti-Smuggling
- Coastal Defence
- Base Protection

Naval Platforms

- Patrol Boats
- Coast Guard Boats
- Combat Ships
- Landing Ships



Specifications are subject to change without any notice. | All tolerances are within $\pm 10\%$.