

# KOCATEPE | HQ 100

BATTLEFIELD MANAGEMENT SYSTEM

#C4I



KOCATEPE HQ 100 Battlefield Management System is a command post level C4I system for use in Battalion and upper level tactical command posts and strategic level headquarters. It utilizes collaborative tools for providing the commanders and command post personnel at each level a comprehensive view of the battlefield.



**aselsan**

# KOCATEPE | HQ 100

## BATTLEFIELD MANAGEMENT SYSTEM

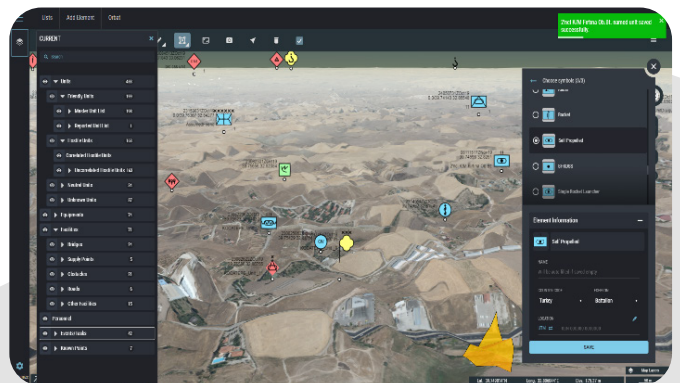
### Main Functions

- Preparation of Organization for Battle
- Functionalities and Analysis Supporting Military Decision Making Process
- Functionality Supporting Intelligence Preparation of the Battlefield
- Creating Order of Battle and Appendices
- Creating and Sharing of the Common Operation Picture
- Personnel and Logistics Data Queries and Analysis
- UI for Different Roles and Functional Areas
- Dashboard
- Military Symbology
- Centralized and Web Based Multi-Client Application
- Scalable and Flexible Software Architecture for Future Add-On Features
- 3D GIS and Layered Presentation
- Recording and Reply of Operational Data
- User Friendly Interface and Map-Centric Operation
- 24/7 High Availability
- Coordination
  - Integration to other C4ISR systems
  - Integration to NATO Systems (NCOP, MIP 3.1, MIP 4.4, NVG, AdatP3)
  - Interoperability standards (MIL-STD-6017B (STANAG 5519) VMF (Variable Message Format) standard

### Functional Area Support For Battalion And Upper Levels

KOCATEPE HQ 100 functional area capabilities available for various Command Post personnel at battalion and upper levels are:

- Operations
- Intelligence
- Personnel
- Logistics
- Fire Support
- Air Defense
- Army Aviation
- Electronic Warfare
- Communications
- CBRN
- Engineering



Specifications are subject to change without any notice. | All tolerances are within  $\pm 10\%$ .

SST - KOCATEPE HQ 100 - 11.11.2024