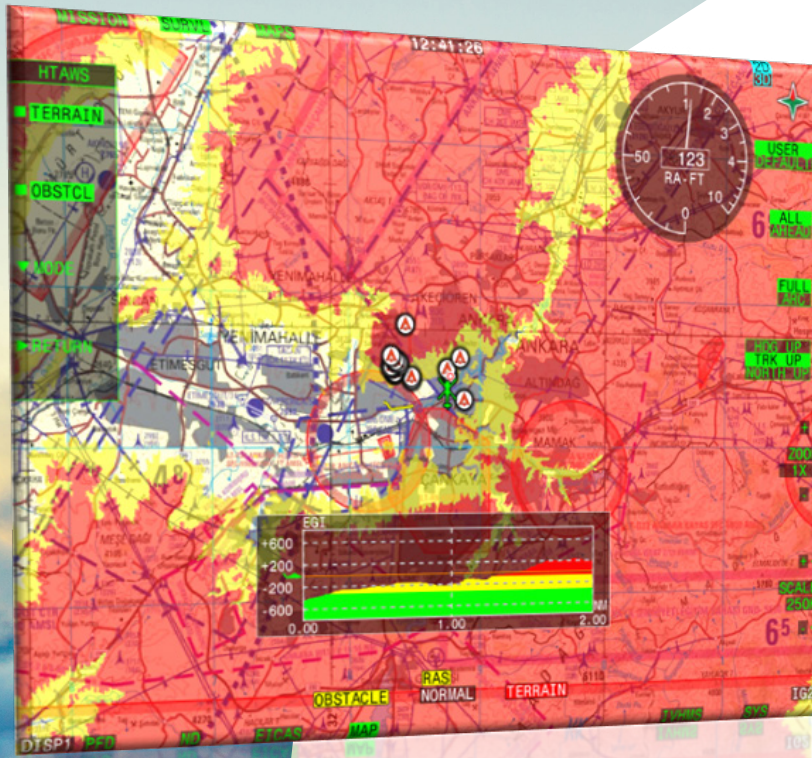


SKYMAP

DIGITAL MOVING MAP / HTAWS SYSTEM

#Avionics



2D/3D VIEW SUPPORT
DO-257A COMPLIANT MOVING MAP DESIGN
DO-309 COMPLIANT HTAWS DESIGN
NAVIGATION DISPLAY SUPPORT
RE-USABLE & CROSS PLATFORM SOFTWARE DESIGN
100+ LAYER/CAPABILITY



aselsan

SKYMAP

DIGITAL MOVING MAP / HTAWS SYSTEM

SKYMAP is a Digital Moving Map developed by ASELSAN, for T-70 Black Hawk and T-625 Gökbeý Utility Helicopters. SKYMAP has DO-257A complaint, flexible and compact design that can be easily adapted to different platforms and hardware.

SKYMAP aims to increase situational awareness of the pilots with more than 100+ layer and capability support. It can perform these capabilities in both 2D and 3D views.

SKYMAP has an optionally integrated DO-309 compliant HTAWS system which has the highest update period supported with highest resolution data compared to other HTAWS products. DTED-2 is used to generate the HTAWS terrain alerts and display the Height Above Terrain Analysis with a 20 Hz refresh rate. SKYMAP HTAWS includes an algorithm that can easily adapt to turns with this high update period.

General

- Re-usable Design (Fixed-Wing / Rotorcraft Platforms)
- 2D / 3D View Support
- Navigation Display Support (HSI & Analog Radalt)
- Track Up / North Up / Head Up Display
- 70+ Datum Support

Digital Moving Map

- DO-257A Compliant Digital Moving Map Design
- DO-178B / DO-178C Level C Compliant Software
- 20 Hz Refresh Rate
- Background Map Display Support for 8 scales (1/8K - 1/5M)
- Additional Raster Map Supports (EAC, Relief Map)
- User Defined Raster Map Display Support
- Vector Layer Support
 - Navigation Database Layers (Airport, Heliport, NAVAID, RAS, FIR, Waypoint, CAS)
 - NOTAM, User Defined Area Display
 - Street Map, POI (Point of Interest) Display
 - Border, Intelligence Photo, Reminder Layers Display
 - Range Ring / Bingo Line Display
- MIL-STD 2525C Compliant Tactical Symbolology Support
- Aeronautical Chart Search & Display
- User Defined Layer Support (Flight Plan, Flight Plan Modification, Flight Plan Patterns, Off route Point, Mark Point, User Defined Waypoint)
- Real Time Search Support (POI, Navigation DB, Street Map)
- Real Time Alerting Support (NOTAM, RAS, User Area, Border, Threat)
- Real Time Analysis Support (Line of Sight, Vertical Situation Display, Threat Coverage)
- Information Widgets (Aircraft Data, HSI, Radalt, Navigation Data Block, North Icon, Search List, CAS Popup etc.)

HTAWS (Helicopter Terrain Awareness and Warning System)

- DO-309 Compliant HTAWS Design
- DTED-2 Based Terrain/Obstacle Alert Generation at 20 Hz
- DTED-2 Based Height Above Terrain Display at 20 Hz
- Different Modes Support (Normal Mode, Reduced Protection Modes, Increased Protection Mode, Obstacle Only Mode, Inhibit Mode)
- Point / Line Obstacle Support



Specifications are subject to change without any notice. | All tolerances are within $\pm 10\%$.