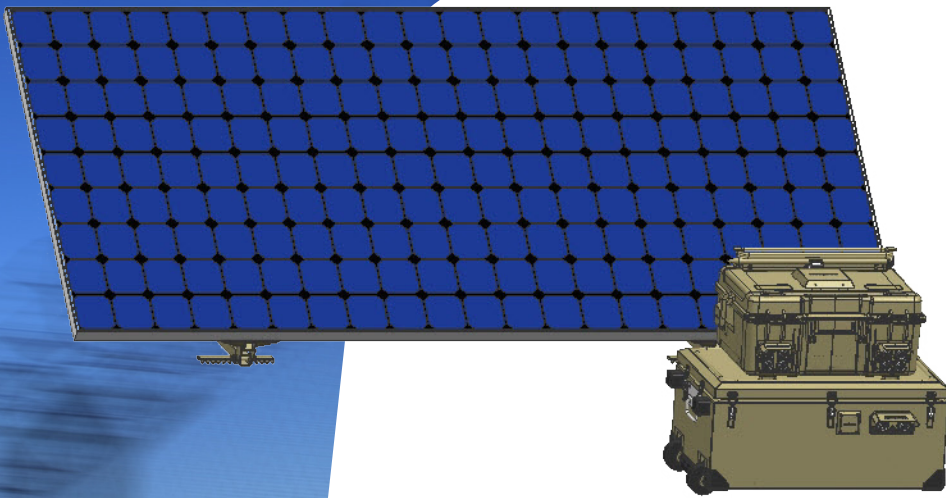


GÜKAS

SOLAR POWERED
SURVEILLANCE SYSTEM

#Security



aselsan

GÜKAS

SOLAR POWERED SURVEILLANCE SYSTEM

GÜKAS is a system that operates using the energy generated from its solar panels or optionally from 220VAC power source. It utilizes this energy to charge its internal batteries and, when required, draws power from these batteries to transmit images via long-distance radio link.

Designed with a mobile structure for easy transport, GÜKAS includes integrated radio link and customizable solar panel(s). It features a battery block (Power Pack), a Power Management Package, and options from ASELSAN Camera Product Family and ASELSAN Recording Infrastructure. This comprehensive system is tailored to meet the needs for both military and civilian applications.

Highlighted Features

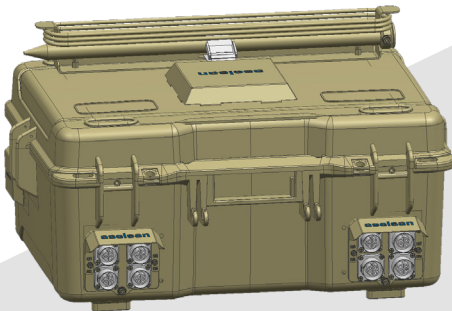
- Wireless Image Transmission
- Compatibility with ASELSAN Camera Product Family
- 23" Live and Recorded Image Monitoring Screen
- Motion Detection Alarm
- Optional 5V USB DC Output
- Optional 220VAC Output
- Customizable Battery Options (Gel and Lithium battery options based on needs)
- Various battery capacities to match power requirements (150Ah, 200Ah, 210Ah)
- Configurable Number of Batteries (according to the specified battery type and capacity)
- Different Solar Panel Power Ratings (350W, 540W)
- Configurable up to 2 solar panels according to the specified solar panel capacity
- IP66 Protection Class
- External Camera Pole (can be positioned up to 5m distance)
- Optional UPS Solutions (Customizable UPS options based on operational infrastructure needs.)

GÜKAS System Components

- Power Management Package
- Power Pack
- External AC Charging Package
- Camera Unit
- Operator Infrastructure
- GÜKAS Accessories

Usage Areas

- Mobile Units
- Base Areas
- Forward Outposts
- Road Checkpoints
- Critical Facilities
- City Centers
- Places with Social Events
- Construction Sites
- Mine Fields
- Refugee Camps and Shelters
- Touristic Camping Areas
- Disaster Zones
- Surveillance/Fire Towers
- Rally/Demonstration Areas
- Coastal Surveillance Points/Stations



Power Management Package



Power Pack

Specifications are subject to change without any notice. | All tolerances are within $\pm 10\%$.