

GÖKDENİZ EO

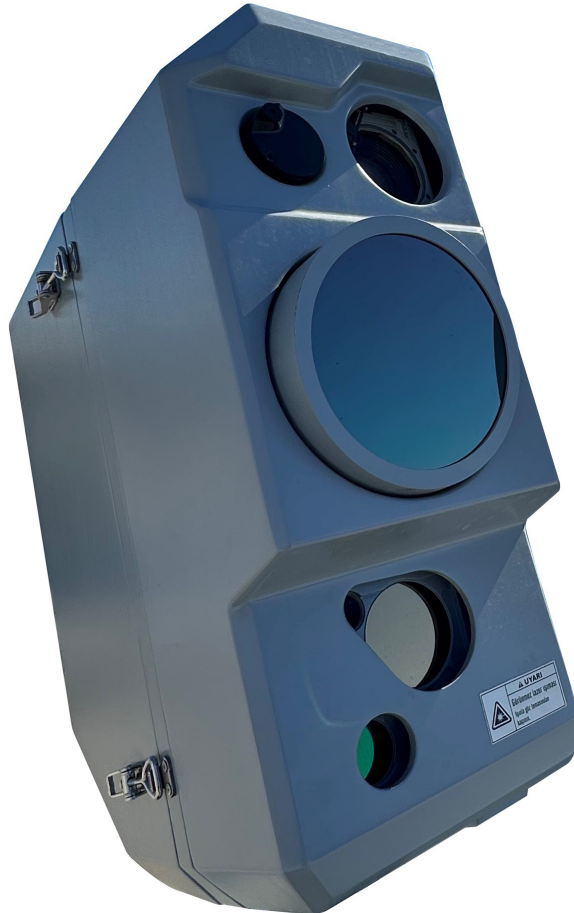
ELECTROOPTIC SYSTEMS INTEGRATED TO THE
WEAPON SYSTEMS

HIGH PERFORMANCE THERMAL CAMERA

HIGH PERFORMANCE DAYTIME VISION UNIT

LASER RANGE FINDER, HARMLESS TO THE EYES

LOW ERROR RATE AND HIGH MISSION CONTINUITY





GÖKDENİZ EO

ELECTROOPTIC SYSTEMS INTEGRATED TO THE WEAPON SYSTEMS

Application

- Large Ships
- Fire Control Radars
- Long Range Target Detection/ Identification for Close In Weapon Systems

General Properties

- High Performance Middle Wavelength Infrared (MWIR) Camera
- High Performance HDTV Camera
- High Performance Daytime Vision Unit
- Laser Range Finder compatible with NATO STANAG 3733
- Laser Range Finder, harmless to eyes
- Vision Optimization
- Vision Polarization
- Vision Freezing
- BIT Function
- Laser Dimming Signal Exit
- Ability to Boresight on the Platform

Laser Range Finder

- Wave Length : 1570 nm
- Measurement Range : 300m-25km*
- Measurement Accuracy : ± 5 m (1σ)
- Max Frequency of Recurrence : 20 Hz

* Laser Range Finder Range Performance

- Valid for the good weather conditions with a sight distance of 23 km and valid where all the laser beam is on the target.

Interfaces

- Communication : Ethernet
- Video : Ethernet, PAL

Power Properties

- Match : STANAG 1008

Mechanical Properties

- Total Weight (kg)
 - Thermal Camera : 10.5 ± 0.25 kg
 - TV Camera : $\leq 6,5$
 - Laser Range Finder : ≤ 9 kg

Environmental Conditions

- MIL-STD-810g W/Change 1
- MIL-STD-461F

GÖKDENİZ EO Properties

MWIR Thermal Camera	Wave Length	3-5 μ m
	Wide Perspective, angle of vision	17°
	Middle Perspective, angle of vision	6,4°
	Narrow Perspective, angle of vision	2°
	The Most Narrow Perspective, angle of vision	0,92°
	Sensor Resolution	640x512
	Numerical Magnification	2x.4x
	Focus	Automatic and manual
TV Camera	Sensor Resolution	1920x1080
	Sensor	1/2" CMOS
	Perspective	HD-SDI: Narrow: 1.5° (± 10) Wide: 30° (± 10)
	Optic Zoom	Continuous, x20 (± 10)
	Electronic Zoom	x2, x4 (Gradual)
	Shutter	Global
	Video Exit	HD-SDI, Ethernet, Composite Analog
	Remote Control	RS422, Ethernet
Spotter Camera	Voltage Level	28 VDC
	Sensor Technology	CCD
	Perspective	0.5°
	Focus	Manual

