

DENİZGÖZÜ PİRANA

ELECTRO-OPTICAL RECONNAISSANCE,
SURVEILLANCE AND TARGETING SYSTEM

HIGH PERFORMANCE IR CAMERA

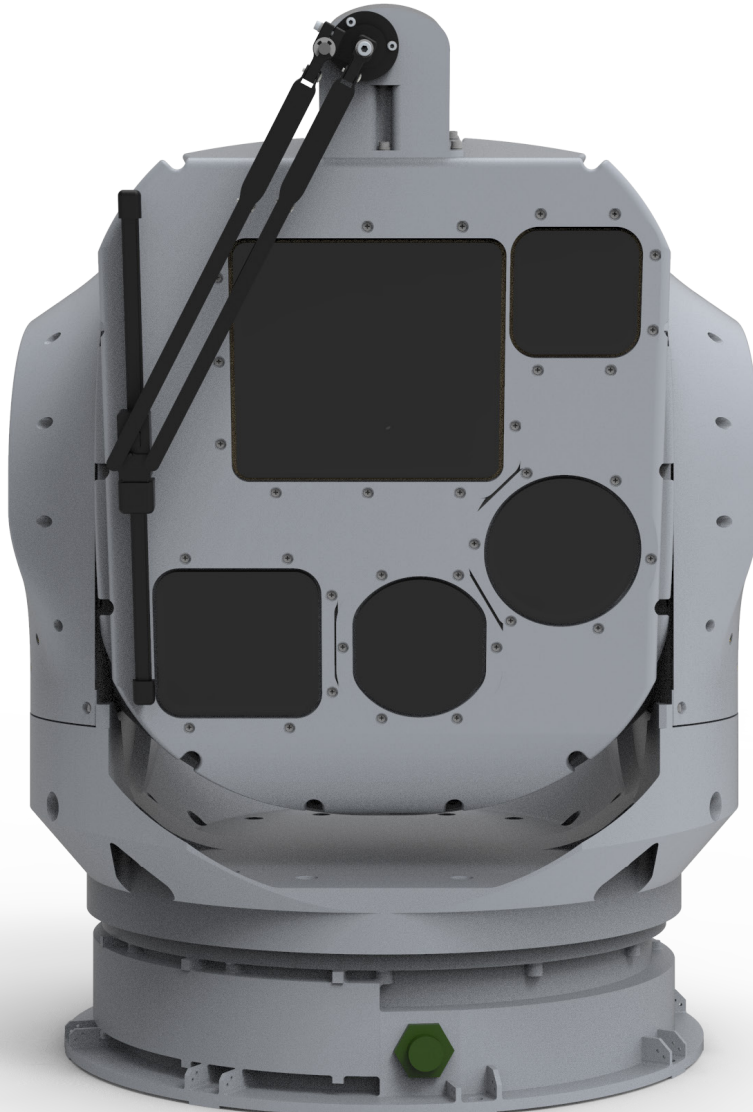
FULL HD DAY TV CAMERA

SWIR CAMERA

LASER DESIGNATOR

LASER RANGE FINDER

SINGLE LRU





DENİZGÖZÜ PİRANA

ELECTRO-OPTICAL RECONNAISSANCE, SURVEILLANCE AND TARGETING SYSTEM

Applications

- Unmanned Surface Vehicles
- Armed Unmanned Surface Vehicles
- Reconnaissance, Surveillance and Targeting
- Border/Coast Security
- Long Range Detection, Recognition & Identification

Main Features

- High Performance Cooled IR Camera (MWIR)
- Full HD Color Day TV Camera
- Laser Range Finder
- Laser Designator
- SWIR Camera
- Compact and Lightweight Design
- Single LRU System
- Superior Range Performance
- Advanced Image Processing
- Multi Target Tracking
- Accurate Target Geo-Location
- Determination of Coarse and Speed of Moving Target
- Inertial Measurement Unit (IMU)
- Gyroscopic Stabilization

Technical Specifications

| | |
|-------------------------|--------------------------------------------------------------|
| IR Camera | Sensor Resolution: 1024x768 |
| | Wavelength: 3-5 μm (MWIR) |
| | Fields of View (FOVs) (Horizontal): Narrow: 1.4° Wide: 25.0° |
| HDTV Camera | Sensor Resolution: 1920 x 1080 |
| | Fields of View (FOVs) (Horizontal): Narrow: 1° Wide: 18° |
| SWIR Camera | Sensor Resolution: 640 x 512 |
| | Wavelength: 0.9 - 1.7 μm (SWIR) |
| | Fields of View (FOVs) (Horizontal): Narrow: 1.6° Wide: 27° |
| Laser Range Finder | Wavelength: 1064 nm |
| Laser Target Designator | Laser type: Diode pumped |
| | ND:YAG |
| | Wavelength: 1064 nm |
| | Repetition Rate: up to 20 Hz |
| Field of Regard (FOR) | Coding : STANAG 3733 Band I & II |
| | Azimuth: 360° Continuous |
| Communication Interface | Elevation: -70° to +95° |
| | Ethernet, RS-422 |
| Video Interface | SMPTE-292M HD-SDI (1920x 1080p) |
| | Ethernet (1280x720p) |
| Power Interface | 28 VDC |
| Temperate | Working: -20°C to +50°C |
| | Storage: -40°C to +71°C |