



# COBALT | CITYLINE

aselsan

METRO SIGNALING SYSTEM

#Transportation



aselsan

## METRO SIGNALING SYSTEM

ASELSAN COBALT Urban Railway Signaling System is based on CBTC (Communication Based Train Control) technology. Safety, Efficiency, Punctuality and High Capacity are provided for Modern Urban Rail Transportation Systems.

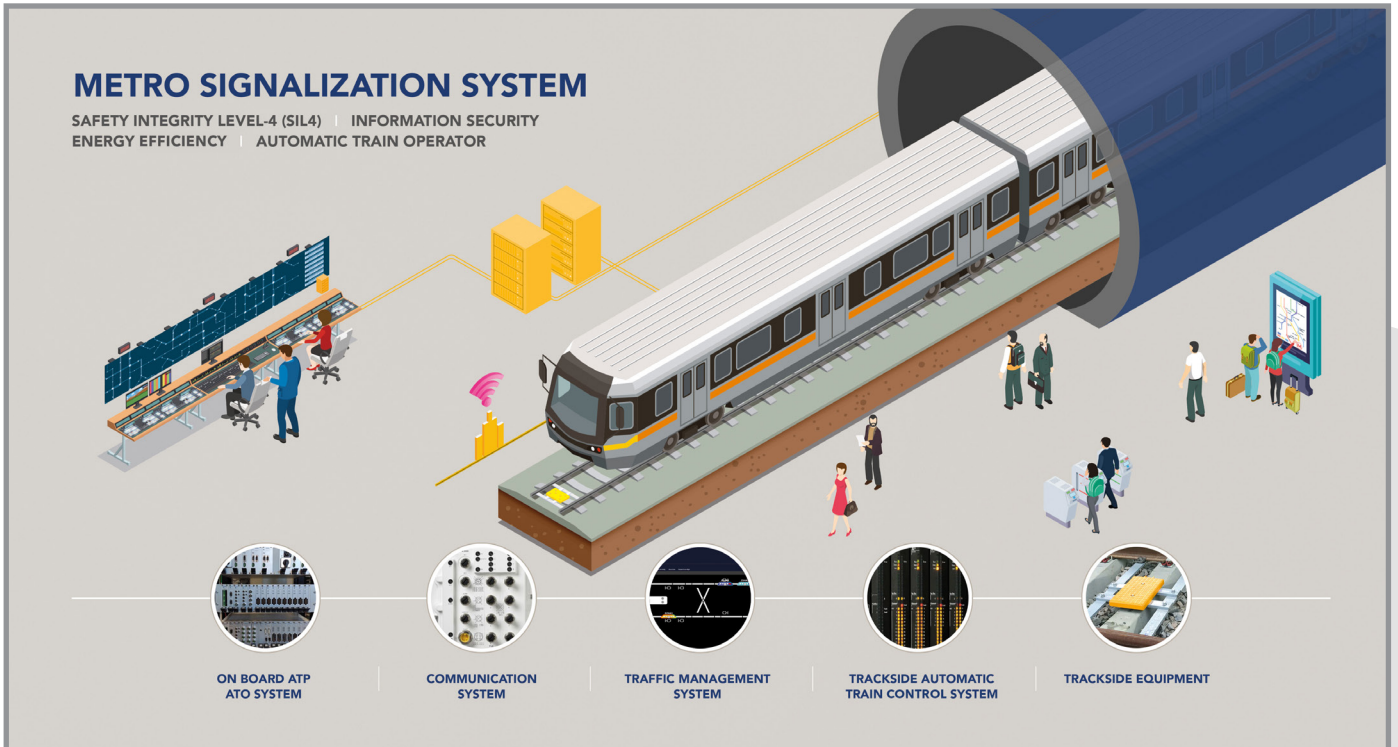
- Intelligent and complete solutions for Brownfield on Greenfield lines and at all Grades of Automation (GoA)
- Integrated Intelligent Traffic Management System by COBALT Maestro
- Automatic Train Operation (ATO) with Energy Efficient Driving Techniques
- Shorter Headways between trains provided by Moving Block system
- Easy integration at wayside and on-board systems by IP based and Distributed System Architecture
- Wayside System architecture without secondary train detection
- Reduced Operation and Maintenance Costs thanks to minimized equipment in the field
- Easy and complete integration for external interfaces

### Features

- Configurable system design (GoA-1 to GoA-4)
- COBALT Maestro Automatic Train Supervision
- Communication Systems
- On-board Automatic Train Protection (ATP)
- Wayside Automatic Train Protection (ATP)
- SIL 4 certified

### Standards

- EN 50126, EN 50128, EN 50129, EN 50159
- EN 50125, EN 50121, EN 61000
- IEC 62290, IEEE 1474



Specifications are subject to change without any notice. | All tolerances are within  $\pm 10\%$ .

UGES - COBALT CITYLINE - 09.2024