

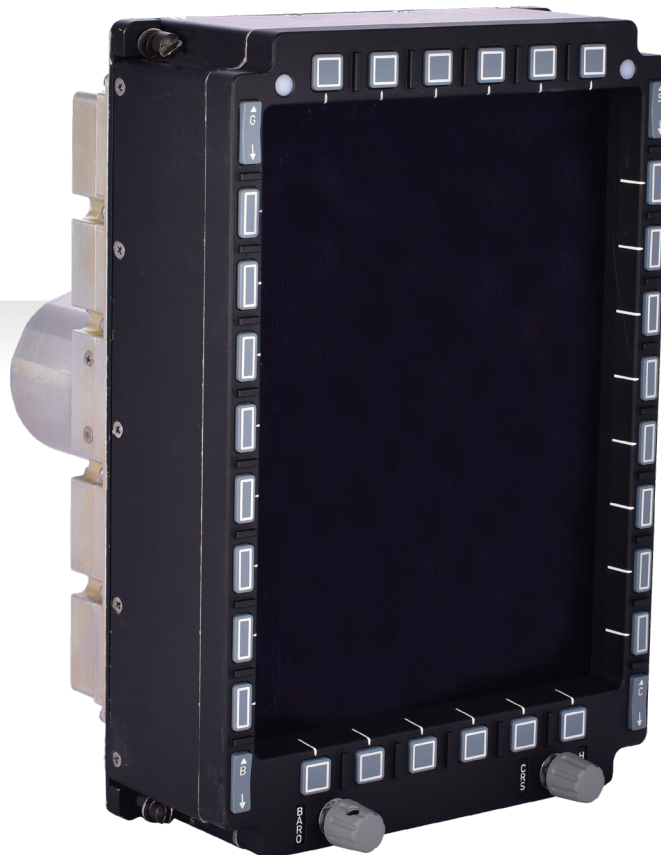
CCD-68

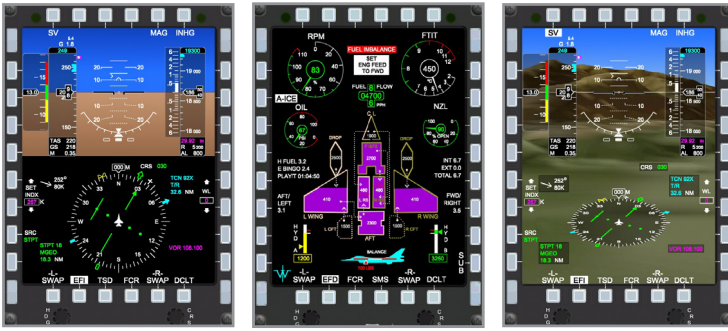
CENTRAL COCKPIT DISPLAY

6" x 8" AMLCD ACTIVE DISPLAY AREA

1024 x 768 RESOLUTION

WIDE VIEWING ANGLE





CCD-68

CENTRAL COCKPIT DISPLAY

CCD-68 Central Cockpit Display is designed as color flat panel display using Active Matrix Liquid Crystal Display (AMLCD) technology, with an active display area of 6 by 8 inches. It is specially designed for mission computer applications with digital video input displaying and digital input/output processing capabilities.

CCD-68 can display Display Port 1.1A video inputs for resolution 1024 by 768.

CCD-68 also provides Display Port 1.1A video output of the displayed video for video recording applications.

CCD-68 outputs pressed bezel key information via RS-485 and provides detailed maintenance information via RS-232 interface. Sophisticated RS-485 interface protocol provides flexible communication interface to Mission Computers or other airborne computers.

The CCD-68 has extended configuration options to support customer specific configurations.

General Specifications

- Wide Dimming Range
- NVIS Class B Compatible
- User Configurable Bezel Keys
- Single LRU Compact Design
- Easy to Integrate
- Ideal Match for Mission Computer Applications

Interfaces

- Display Port 1.1A Digital Video Inputs
- Display Port 1.1A Digital Video Output
- Serial Interface (RS-232/RS-485)
- Discrete I/O Interface

Physical Specifications

- Dimensions: 178 mm (W) x 261 mm (H) x 104 mm (D)
- Weight: < 5.25 kg

Technical Specifications

- Power Input : 28 VDC (Nominal)
- Power Consumption : 135W (Nominal) / 275W (Maximum)
- Power hold-up for short time power interrupts
- Display Type : Color Active Matrix Liquid Crystal Display
- Display Area : 6" x 8" (10" diagonal)
- Resolution : 1024 x 768 (124 color groups per inch)
- Display Color : 16.2 million colors
- Viewing Envelope : +/- 70° horizontal
: +/- 70° vertical
- Luminance Range : 0.03 fL - 300 fL
- NVIS Compatibility : MIL-STD-3009, Class B

Environmental Conditions

- Operating Temperature and Altitude : -40°C / +55°C, 31.000 ft
- Storage Temperature and Altitude : -55°C / +85°C, 55.000 ft

Qualifications

- MIL-STD-810F
- MIL-STD-461E
- MIL-STD-704A
- Compliant to fighter jet environmental qualification conditions