

ATS-62

ELECTRO OPTIC SENSOR SYSTEM

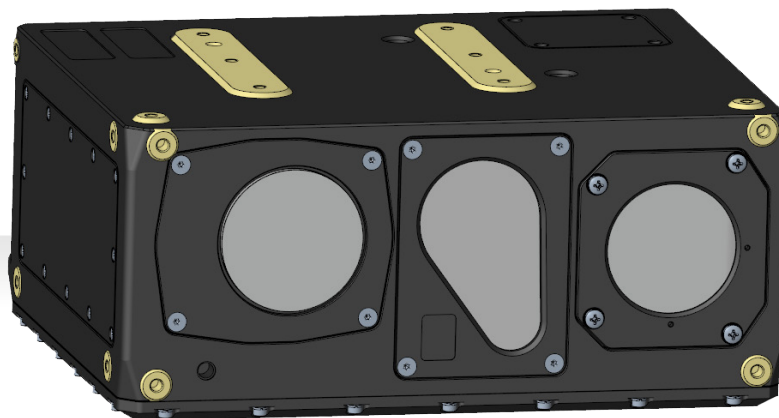
MID-WAVE IR DETECTOR

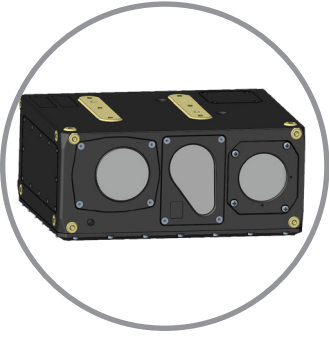
COLOR DAY TV

EYE SAFE LASER RANGE FINDER

CONTINUOUS ZOOM CAPABILITY

COMPACT AND RUGGEDIZED





ATS-62

ELECTRO OPTIC SENSOR SYSTEM

Applications

- Armored Vehicles
- Remote Weapon Systems

Main Features

- Compact, Rugged, Military Hardened
- VGA Cooled Thermal Camera
- Continuous Zoom Day TV Camera
- Eye-Safe Laser Range Finder
- Separate Simultaneous Day TV & Thermal Video Output Capability
- Day TV/Thermal Video Switching Capability
- Day TV/Thermal Video Freezing Capability
- Thermal Video Polarity Selection
- Automatic/ Manual Contrast and Brightness Adjustment
- Target Range Measurement Capability
- Laser Reflection Selection
- Laser Blanking Signal
- Automatic image optimization and image enhancements
- Built in Test Capability
- Remote Command and Control Capability

System Interfaces

- Power Interface : 18V-33V
- Communication Interface : RS-422, Ethernet
- Video Interface : Composite Analog Video (PAL) ,
: Ethernet (RFC-4175, RFC-2435)

Environmental Conditions

- Operating Temperature : -35°C to +55°C
- Storage Temperature : -45°C to +70°C
- Environmental Spec : MIL-STD-810 H

Electromagnetic Conditions

- MIL-STD-461G (Ground, Army: Applicable)

Dimensions and Weight

- Dimensions (h x w x d) : 131 x 287 x 221 mm (excl. connectors)
- Weight : Less than 10 kg

Technical Specifications

Thermal Camera

- Sensor Type : Cooled, 3-5 μm
- Sensor Format : 640 x 512
- Continuous Zoom Capability
- Field of View
 - Continuous from 2° to 25° (\pm %10)
 - 5 Preset FOV (Horizontal x Vertical)
 - Preset 1 (NFOV) : 2.0° x 1.6° (\pm %10)
 - Preset 2 (MNFOV) : 3.5° x 2.8° (\pm %10)
 - Preset 3 (MFOV) : 6.0° x 4.8° (\pm %10)
 - Preset 4 (MWFOV) : 10° x 8.0° (\pm %10)
 - Preset 5 (WFOV) : 25° x 20° (\pm %10)
- Electronic Zoom : x2
- Cool-down Time : 7 min. (@23°C)

Day TV Camera

- Sensor Type : CCD/CMOS
- Sensor Format : 1920 x 1080
- Continuous Zoom Capability
- Field of View
 - Continuous from 1.7° to 44° (\pm %10)
 - 6 Preset FOV (Horizontal x Vertical)
 - Preset 1 (NFOV) : 2.0° x 1.6° (\pm %10)
 - Preset 2 (MNFOV) : 3.5° x 2.8° (\pm %10)
 - Preset 3 (MFOV) : 6.0° x 4.8° (\pm %10)
 - Preset 4 (MWFOV) : 10° x 8.0° (\pm %10)
 - Preset 5 (WFOV) : 25° x 20° (\pm %10)
 - Preset 6 (WFOV2) : 40° x 32° (\pm %10)
- Electronic Zoom : x2, x4

Laser Range Finder

- Type : Class 1, Eye Safe
- Wavelength : 1.54 μm
- Range : 100m - 10000m
- Accuracy : \pm 5m
- Measurement Rate : 20 measurement/minute

