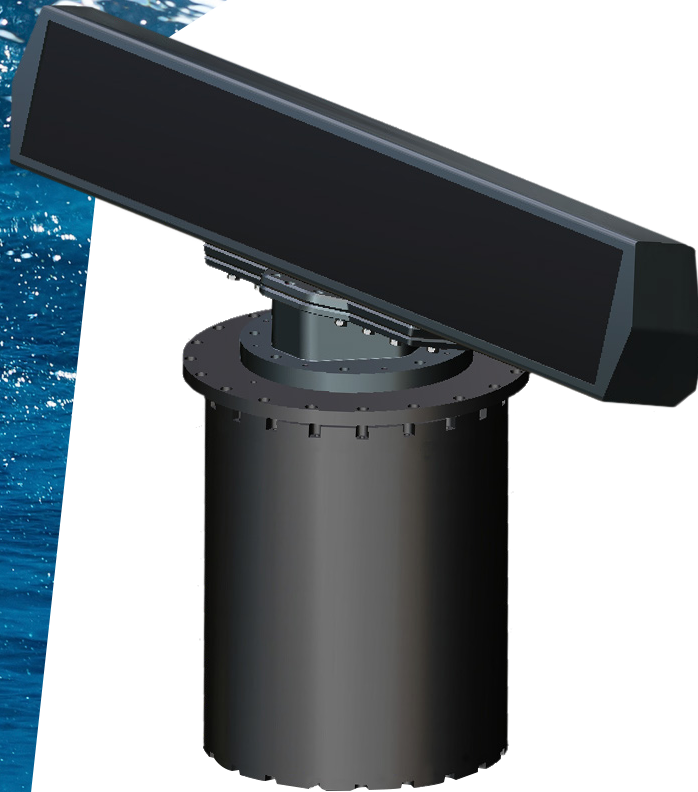




SUBMARINE PULSED LPI RADAR

#Radar



aselsan

SUBMARINE PULSED LPI RADAR

ALPER 210-N, which can be integrated on various submarine masts, is a low probability of intercept navigation radar system for detecting surface targets in all weather conditions and sea states, while not being detected by hostile ESM systems, featuring low power and special frequency-waveform regime.

Technical Specifications

- Special Pulsed Waveform
- Frequency Hopping
- Solid State Transmit/Receive Modules
- 48NM Instrumented Range
- 1W-200W Peak Power
- 15m Range Discrimination
- ARPA Tracker with 100 Capacity
- (W)AIS Integration
- S57/S63 Chart Display
- Radar Video Freeze
- Radiation Time/Rotation Scanning Limit for Decreased Detectability
- Antenna and Antenna Rotating Unit Certified to 60 Bar Pressure



Specifications are subject to change without any notice. | All tolerances are within $\pm 10\%$.